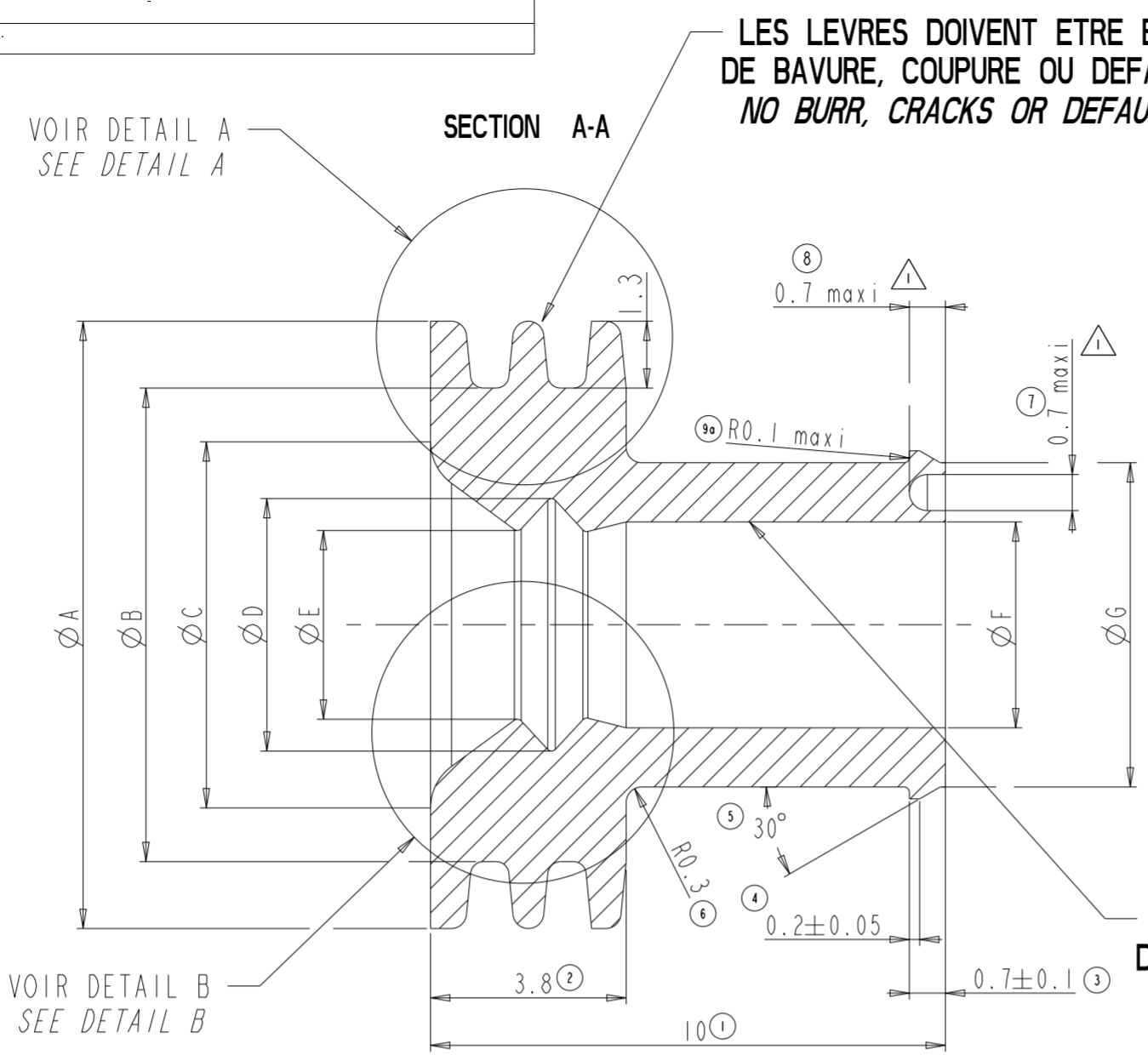
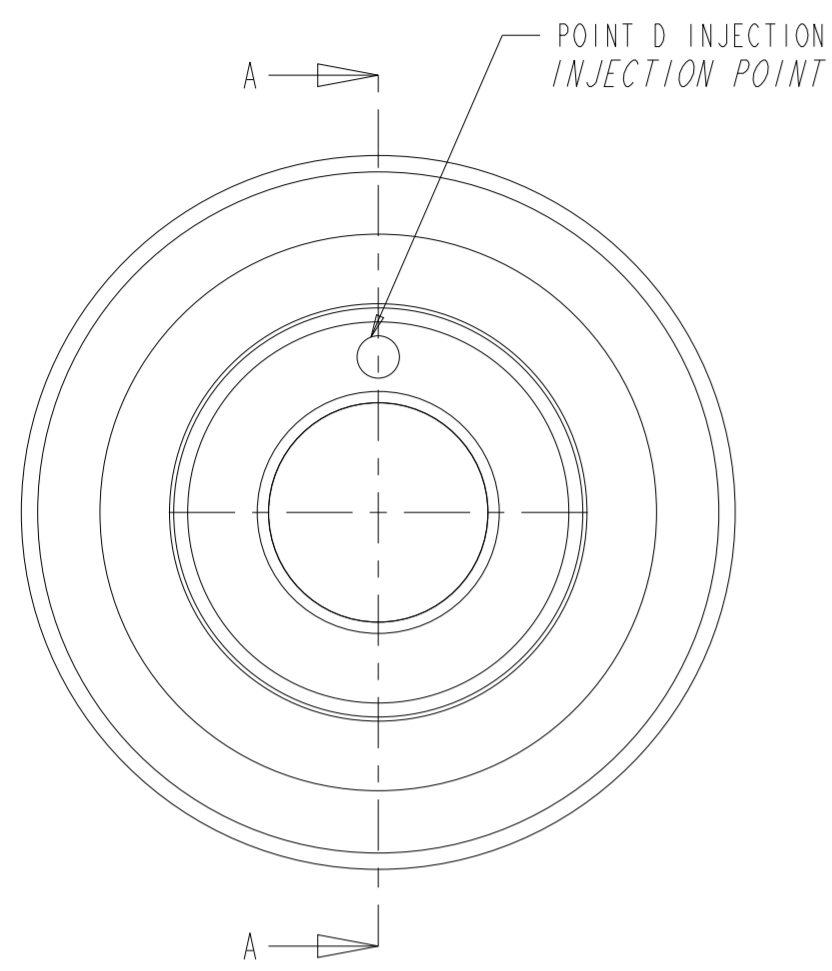


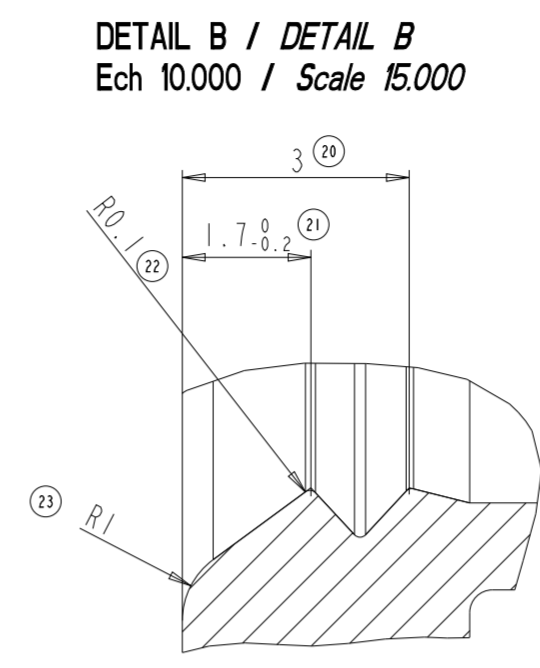
THIS DRAWING IS UNPUBLISHED. RELEASED FOR PUBLICATION  
 © COPYRIGHT copyright.dBTe- ALL RIGHTS RESERVED.

REVISIONS					
P	LTR	DESCRIPTION	DATE	DWN	APVD
D		rep 15 0.8±0.15 WAS 0.8++0.1	25OCT2018	PB	XR
E		TITLE BLOCK CORRECTED	04MAR2021	FB	XR

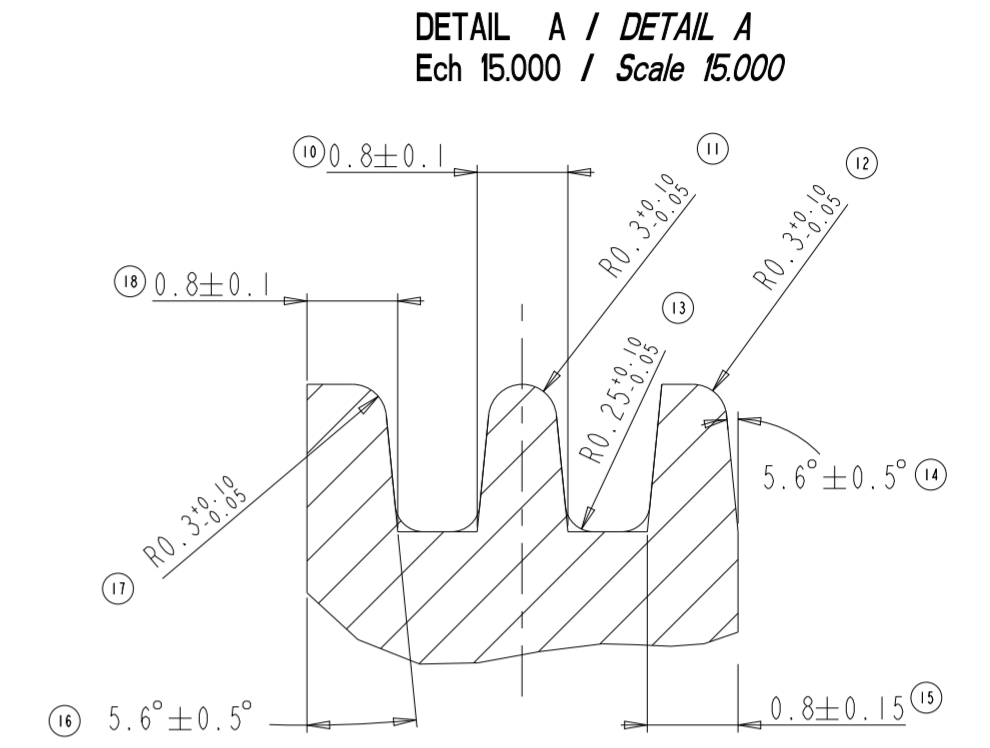


LES LEVRES DOIVENT ETRE EXEMPTES DE BAVURE, COUPURE OU DEFAUT D ASPECT...  
 NO BURR, CRACKS OR DEFAULT PERMITTED ON LIPS...

LES SURFACES INTERIEURES DOIVENT ETRE EXEMPTES DE DEFAUT, BAVURE, COUPURE OU DEFORMATION...  
 INSIDE AREAS MUSN'T PRESENT BURR, CRACK, DEFORMATION...



DETAIL B / DETAIL B  
 Ech 10.000 / Scale 15.000



DETAIL A / DETAIL A  
 Ech 15.000 / Scale 15.000

DESIGNATION DESCRIPTION	COULEUR COLOR	REF PRONER PN PRONER	A	B	C	D	E	F	G	REF PSA PN PSA	REF RENAULT PN RENAULT	REF TE PN TE	MASSE WEIGHT
JOINT UNIFILAIRE A SERTIR SINGLE WIRE SEAL SECTION : 3 A (TO) 6 mm <sup>2</sup>	VERT A455±5 GREEN	P8010489526	11.8	9.2	7	4	2.6	3	5.3	9637215880	8200 072 611	1544316-1	0.443 g
JOINT UNIFILAIRE A SERTIR SINGLE WIRE SEAL SECTION : 7 A (TO) 10 mm <sup>2</sup>	ORANGE A110/A130 ORANGE	P8010589526	11.8	9.2	7	6	4	4.5	6.8	9637215980	8200 072 613	1544316-2	0.447 g
BOUCHON D'ETANCHEITE SEALING PLUG	BLANC WHITE	P8010689526	11.8	9.2	--	--	--	1.5	6.8	9637216080	8200 402 054	1544316-3	0.622 g

Notes: -Bavure du point d'injection située dans une zone non fonctionnelle doit être inférieure à 0.4mm de hauteur et 0.3mm d'épaisseur.  
 -An injection point burr located in a no functional area must be less than 0.4mm high and 0.3mm thick  
 -Cotes fonctionnelle A-B-C-D-E-F-G-10-18-15/Functional dimension A-B-C-D-E-F-G-10-18-15

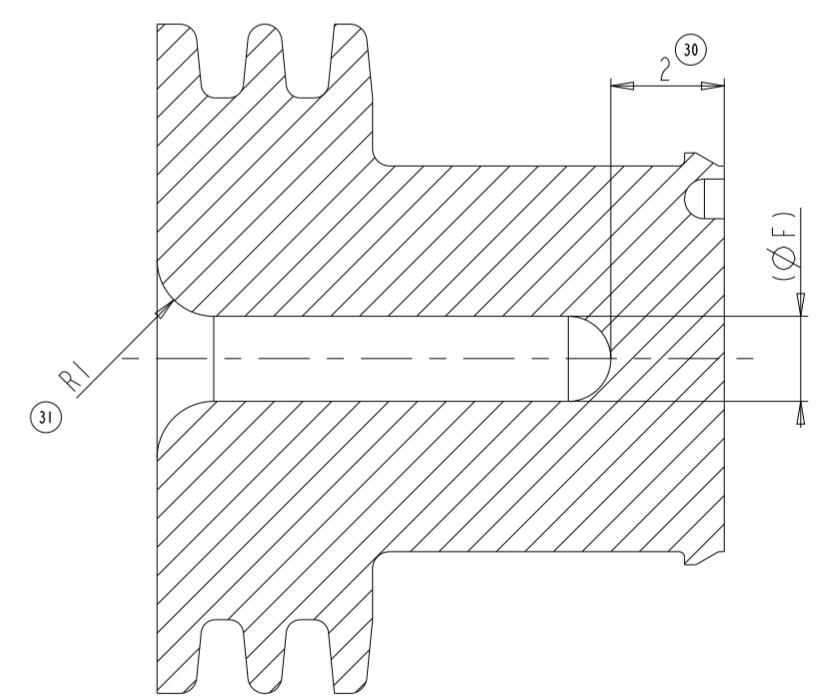
SPECIFICATION  
 -Micro dureté 45±5 DIDC selon NFTA46003 (sur pieces transformées).  
 -Micro hardness 45±5 DIDC according to NF 4600 (on transformed parts).  
 -Allongement à la rupture selon DIN 53 504.  
 -Elongation at break according to DIN 53 504  
 -Déformation rémanente apres compression 22h/175°C selon DIN 53 517  
 -Residual deformation after compression 22h/175°C according to DIN 53 517  
 -Resistance au déchirement suivant norme ASTM D 624/B  
 -Tear strengt according to standard ASTM D 624/B  
 -Tenu aux fluides selon norme PSA :B25 1140 et CDC RENAULT:36 05 019/--E méthode d'essai D47 1924  
 -Fluide ability according to PSA standard :B25 1140 and RENAULT specification:36 05 019/--E, testing method D47 1924

CONDITIONEMENT / PACKAGING  
 -Sachets hermetiques dans carton suivant norme GALIA  
 -Sealed bags in box according to GALIA standard



Echelle 3.000  
 Scale 3.000

BOUCHON D'ETANCHEITE / SEALED PLUG  
 SECTION A-A  
 PN 1544316-3



THIS DRAWING IS A CONTROLLED DOCUMENT.		DWN L. CORONELLI 07NOV2007	TE Connectivity	
DIMENSIONS: mm		CHK P. CHARLES		
TOLERANCES UNLESS OTHERWISE SPECIFIED:		APVD J. DAHER 07NOV2007	NAME	
1. PLC ± 2. PLC ±0.15 3. PLC ± 4. PLC ± ANGLES ±2° FINISH -		PRODUCT SPEC 108-15346	SINGLE WIRE SEAL AND PLUG	
MATERIAL SILICONE		APPLICATION SPEC 411-15697	SIZE A2	RESTRICTED TO
		WEIGHT VOIR TABLE	CAGE CODE 00779	DRAWING NO C-1544316
		CUSTOMER DRAWING	SCALE 8.000	SHEET OF REV E